

# TD5M Low Speed Centrifuge

## Features

- Micro-processor controlled, variable-conversion motor delivers high speed accuracy, low noise and stable operation
- Intuitive touch control panel. Programmable operation can be set according to demands / stored automatically
- LCD screen, user-friendly interface for simple and convenient operation
- The real-time conversion of Speed and RCF is convenient for optimal operation
- Self-locking, lid safety, over-speed detection and automatic alarm are included
- CE, GMP, US FDA Certified



## Specifications

Model / Part Number	TD5M
Max Speed	5,000 r/min
Max RCF	5,030 xg
Max Capacity	4 x 500 ml
Speed Accuracy	± 10r/min
Time Setting	1min ~ 99min
Noise	< 65dB (A)
Power supply	220V / 50Hz-60Hz
Dimension (LxWxH)	460mm x 540mm x 340mm
Packing size (LxWxH)	550mm x 630mm x 430mm
Net weight	31 kg

## Applications

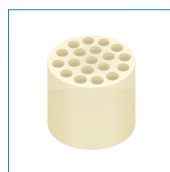
The TD5M Low Speed Centrifuge is widely used in clinical medicine, biochemistry, genetic engineering, immunology. It is likely to be found at hospitals, scientific research units, university laboratories or any places where centrifugal separation is common practice.

## Compatible Rotors

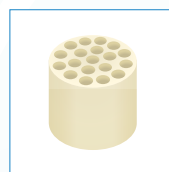


**Swing Out Rotor** **TD5M-R1**  
**Capacity:** 500ml x 4  
**Max. Speed:** 4,000 r/min  
**Max. RCF:** 3,040 xg  
**Buckets:** 4 x 500ml  
**Aerosol Covers:** Not included (Optional)

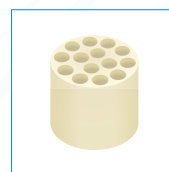
## Adapters



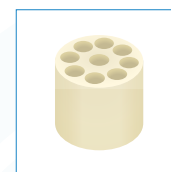
**TD5M-R1-A1**  
18 x 1.5ml (x4)



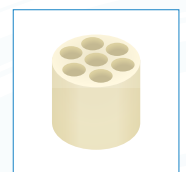
**TD5M-R1-A2**  
19 x 5 / 7ml (x4)  
Blood Vacuum Tube



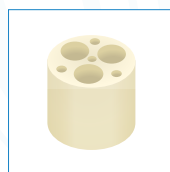
**TD5M-R1-A3**  
14 x 10ml (x4)  
Internal thread



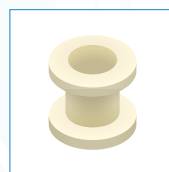
**TD5M-R1-A4**  
9 x 15ml (x4)



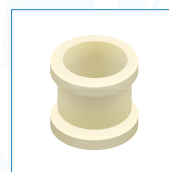
**TD5M-R1-A5**  
7 x 20ml (x4)



**TD5M-R1-A6**  
3 x 50ml (x4)



**TD5M-R1-A7**  
1 x 100ml (x4)



**TD5M-R1-A8**  
1 x 250ml (x4)



**TD5M-BOT**  
Bottle 500ml

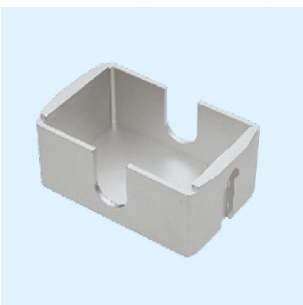
### Compatible Rotors



**Swing Out Rotor** **TD5M-R1SQ**  
**Capacity:** 500ml x 4  
**Max. Speed:** 4,000 r/min  
**Max. RCF:** 3,040 xg  
**Buckets:** x 4 Square  
**Carriers:** Not included (Optional)



**Swing Out Rotor** **TD5M-R3**  
**Max. Speed:** 4,000 r/min  
**Max. RCF:** 3,000 xg



**Microplate Carrier** **TD5M-R2SQ**  
**Capacity:** 4 x 96 Well

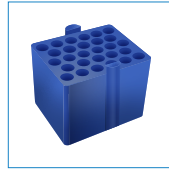


**Microplate Rotor** **TD5M-R4**  
**Capacity:** 8 x 96 Well  
**Max. Speed:** 4,000r/min  
**Max. RCF:** 2,200xg

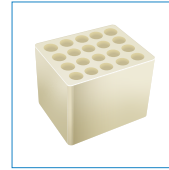
### Adapters



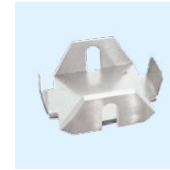
**TD5M-R1SQ-A1**  
 25 x 1.5ml (x4)



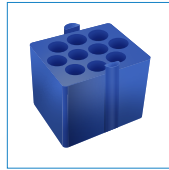
**TD5M-R1SQ-A2**  
 28 x 5ml (x4)  
 Blood Vacuum Tube



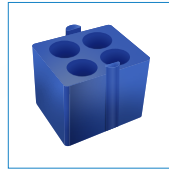
**TD5M-R1SQ-A3**  
 20 x 10ml (x4)  
 Internal Thread



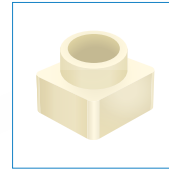
**TD5M-R1M**  
 Microplate  
 Carrier 2 x 96



**TD5M-R1SQ-A4**  
 10 x 15ml (x4)



**TD5M-R1SQ-A5**  
 4 x 50ml (x4)



**TD5M-R1SQ-A6**  
 1 x 250ml (x4)



**TD5M-R3-A1**  
 12 x 7 ml  
 U Bucket



**TD5M-R3-A2**  
 6 x 15 ml  
 U Bucket



**TD5M-R3-A3**  
 9 x 15 ml  
 U Bucket



**TD5M-R3-A4**  
 1 x 50 ml  
 U Bucket



**TD5M-R3-A5**  
 2 x 50 ml  
 U Bucket



**TD5M-R3-A6**  
 1 x 100 ml  
 U Bucket

### Compatible Rotors



**Swing Out Rotor** **TD5M-R5**  
**Capacity:** 500ml x 4  
**Max. Speed:** 4,000 r/min  
**Max. RCF:** 3,040 xg

### Adapters



**TD5M-R5-A1**  
 19 x 7ml / 5ml (x4)



**TD5M-R5-A2**  
 9 x 15ml (x4)



**TD5M-R5-A3**  
 3 x 50ml (x4)



**TD5M-R5-A4**  
 14 x 10ml  
 Snap Cap



**TD5M-R5-A5**  
 14 x 5ml (x4)  
 Snap Cap



**TD5M-R5-A6**  
 18 x 2.2ml / 1.5ml (x4)